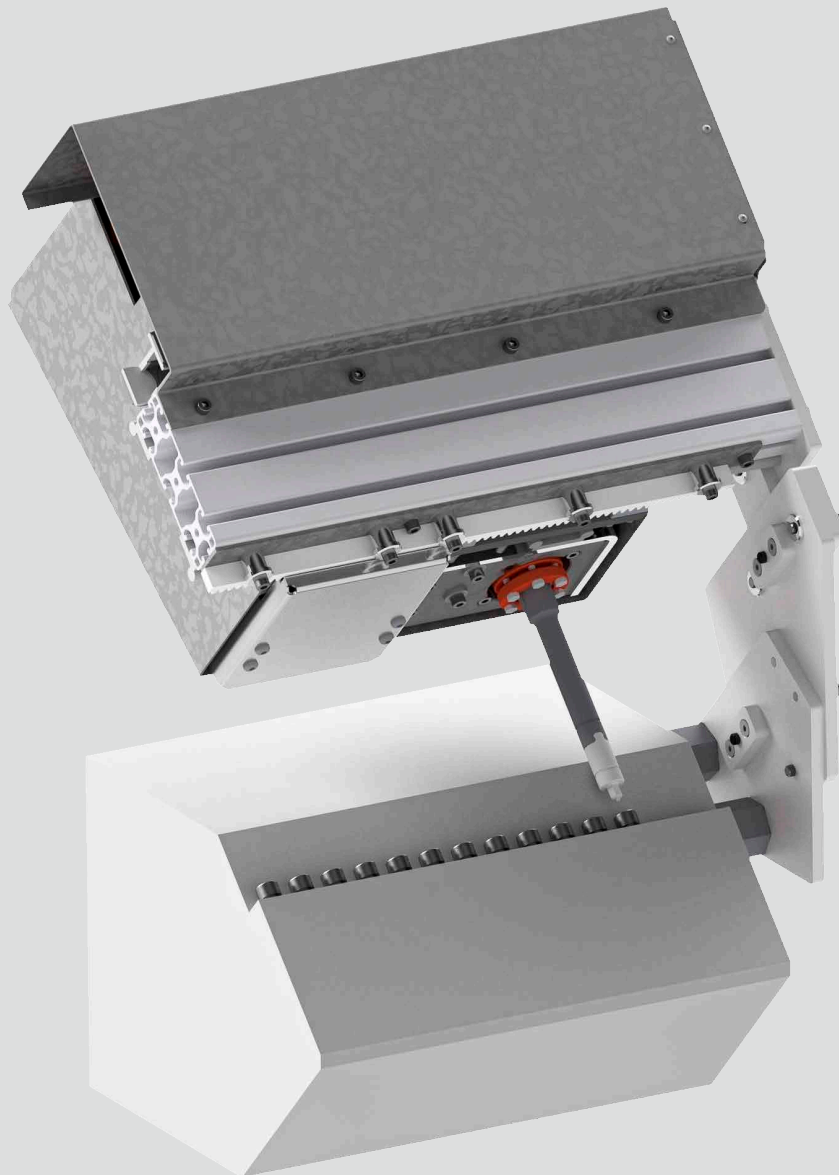
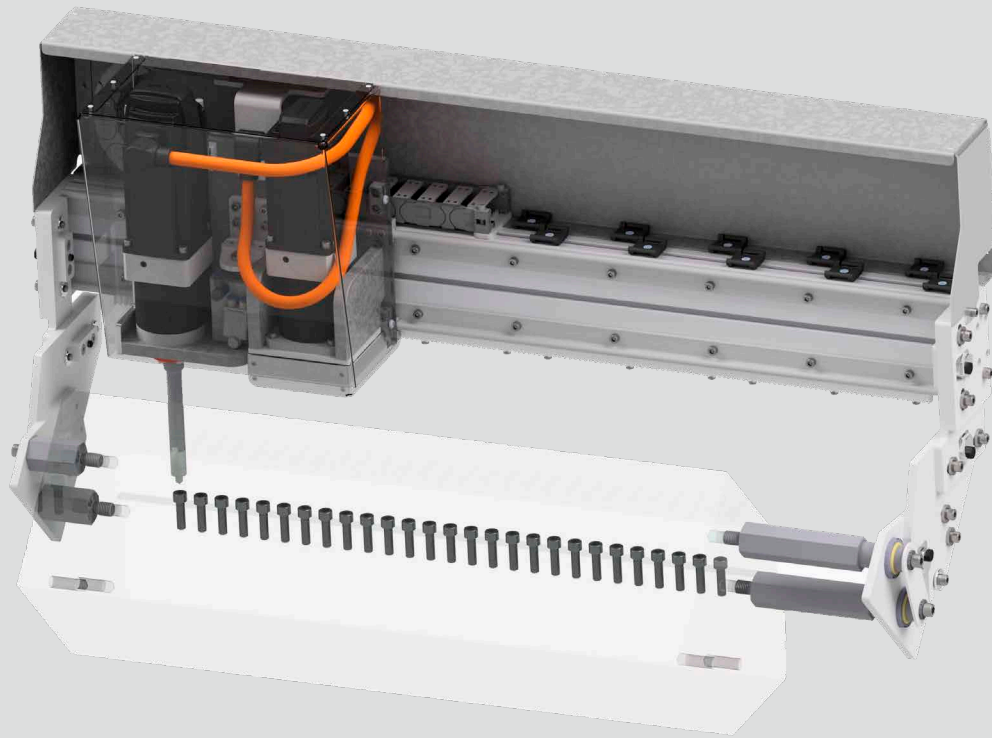


# m2-DieTool<sup>®</sup>



SWISS QUALITY 

**maku ag**   
EXTRUSION DIE AUTOMATION



The patented die lip adjustment system is suitable for flat film extrusion and can be mounted on any wide slot die up to 10 meters wide. The product is only available in manual configuration. Here, the adjusting screws are operated via a touchscreen.

#### ► Characteristics

Thanks to adjustment in a matter of seconds, an even material thickness is ensured. The adjustment of the individual adjusting die bolts can be set and saved with a maximum travel range of 6000 µm. This ensures reproducibility for different products. The product is also available in a semi-automatic mode. The adjusting die bolts are operated via a touchscreen.

- Suitable for extrusion dies for the production of films and sheets
- Adaptable onto extrusion dies up to a width of 10 m
- Adjustment accuracy of  $\pm 1^\circ$  angle adjustment
- Die lip adjustment range of 6000 µm
- Die lip profiles can be stored as nominal profiles
- Low energy consumption
- Gauging system compatible

#### ► Advantages

- No manual intervention necessary on the extrusion die, presetting and fine adjustments are fully carried out by the **maku-DieTool**
- Low standard deviation due to high adjustment accuracy
- Fast changeover times due to real-time adjustment and profile presetting
- Cost-effective operation over thermo bolts
- Increased safety for the machine operators